

Violoncello

Klaviertrio Nr. 2

Die in sich zerfließende Wahrnehmung

für Violine, Violoncello und Klavier

Ergon 80 (2020), Musikwerknnummer 2044

Vorzeichen gelten jeweils nur für eine einzige Note in der entsprechenden Oktavlage. Unmittelbare Tonwiederholungen (auch durch Pausen getrennte) behalten die gleiche Tonhöhe bei. Töne ohne Vorzeichen gelten immer als nicht alteriert.

♩ = 72 / ♩ = 144

sempre détaché

Takt 1-74: Rhythmus wie Violine, außer Takt 3.

René Wohlhauser

ff

2

mp *f* *ff* *mf*

4

f *f*

5

pizz. *arco* *mp* *f*

8

f *mp*

11

14

mf *mp*

17

ff *ff*

19

ff

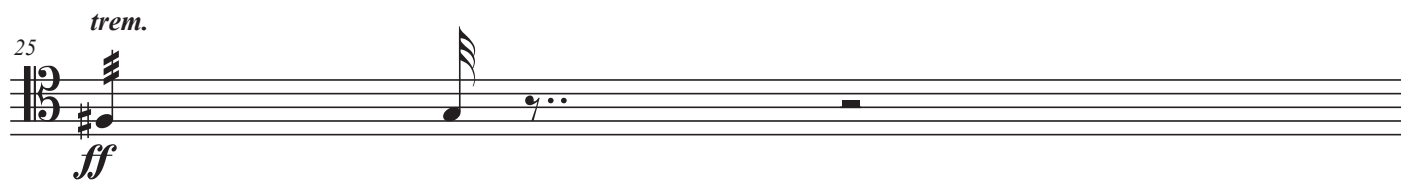
20

ff

22

ff

25 *trem.*
ff



Musical notation for measures 25 and 26. Measure 25 starts with a tremolo marking above the staff. The music consists of a few notes followed by rests. A fortissimo (*ff*) dynamic marking is placed below the staff.

26
ff



Musical notation for measures 27 and 28. Measure 27 begins with a fortissimo (*ff*) dynamic marking. The music features a complex rhythmic pattern of eighth and sixteenth notes.

27
ff



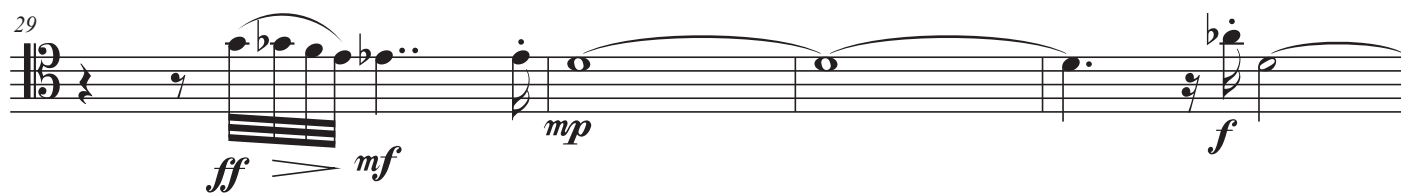
Musical notation for measures 29, 30, 31, and 32. A fortissimo (*ff*) dynamic marking is present. The notation includes various rests and rhythmic figures.

28



Musical notation for measures 33 and 34. The music continues with a complex rhythmic pattern of eighth and sixteenth notes.

29
ff *> mf* *mp* *f*



Musical notation for measures 35 and 36. Measure 35 starts with a fortissimo (*ff*) dynamic, which then softens to mezzo-forte (*mf*) and mezzo-piano (*mp*). Measure 36 concludes with a fortissimo (*f*) dynamic.

33
f *f*



Musical notation for measures 37, 38, 39, and 40. Both measures 37 and 38 begin with a fortissimo (*f*) dynamic. The music features a dense texture of eighth and sixteenth notes.

35
f *f*



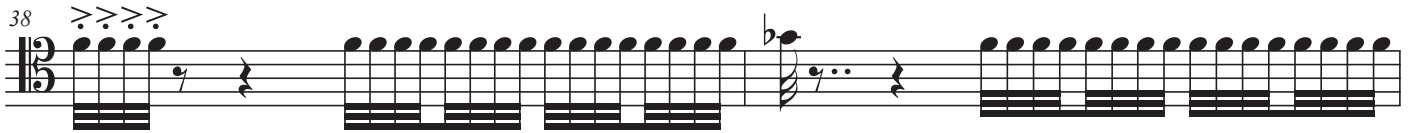
Musical notation for measures 41 and 42. Both measures 41 and 42 start with a fortissimo (*f*) dynamic. The music continues with a rhythmic pattern of eighth notes.

36

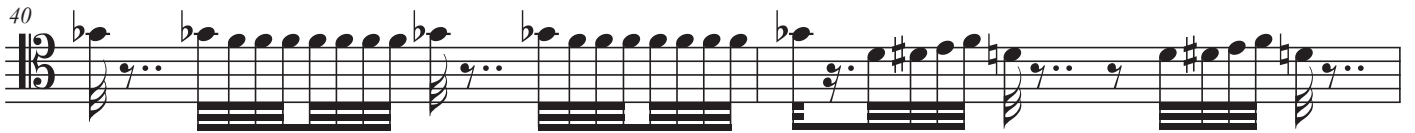


Musical notation for measures 43 and 44. Measure 43 begins with a fortissimo (*f*) dynamic. The music features a complex rhythmic pattern of eighth and sixteenth notes.

38 $\text{>}\text{>}\text{>}\text{>}$



40



42



43



44



45



46



47



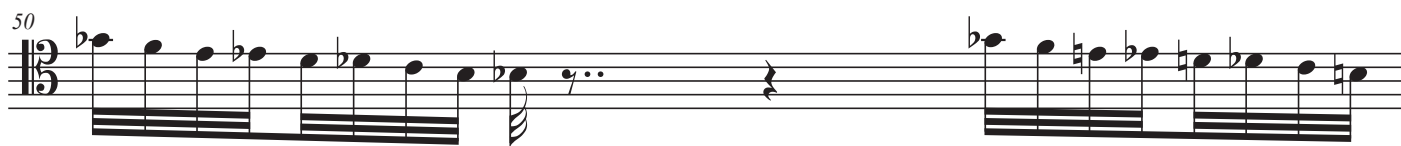
48



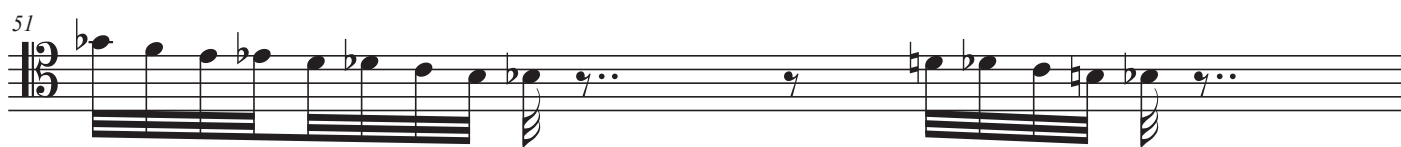
49



50



51



52



53



54



55



56



58

4♩:6♩ 4♩:6♩ 3

Detailed description: This system contains measures 58, 59, and 60. Measure 58 features a bass line with eighth notes and a tenor line with chords. Measures 59 and 60 continue the bass line with eighth notes and chords, with measure 60 ending in a triplet. Brackets below the staff indicate a 4-measure phrase of six eighth notes in measures 58-59 and another 4-measure phrase of six eighth notes in measures 60-61, with a triplet of three eighth notes at the end of measure 60.

59

Detailed description: This system shows measure 59, which continues the bass line with eighth notes and chords, and includes a tenor line with chords.

60

4♩:6♩ 4♩:6♩ 3

Detailed description: This system shows measure 60, which continues the bass line with eighth notes and chords, and includes a tenor line with chords. Brackets below the staff indicate a 4-measure phrase of six eighth notes in measures 60-61 and another 4-measure phrase of six eighth notes in measures 61-62, with a triplet of three eighth notes at the end of measure 60.

61

Detailed description: This system shows measure 61, which continues the bass line with eighth notes and chords, and includes a tenor line with chords.

63

mp

Detailed description: This system shows measure 63, which continues the bass line with eighth notes and chords, and includes a tenor line with chords. The dynamic marking *mp* is placed below the staff.

66

mp *mp* *mp* *mp*

Detailed description: This system shows measure 66, which features a bass line with a single eighth note followed by rests and a tenor line with chords. The dynamic marking *mp* is placed below the staff.

71

p

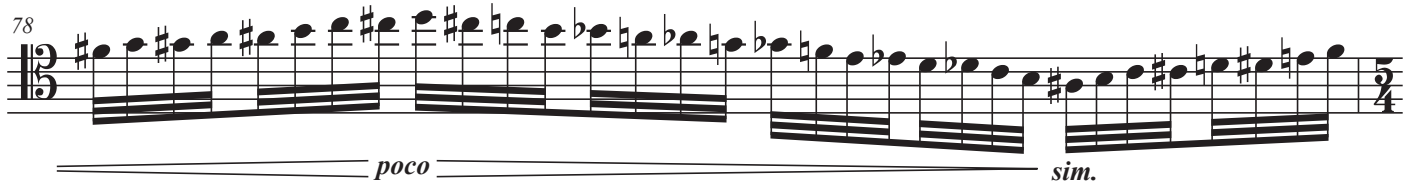
Detailed description: This system shows measure 71, which features a bass line with a single eighth note followed by rests and a tenor line with chords. The dynamic marking *p* is placed below the staff.

77



mf

78



poco *sim.*

79



Takt 79-86: Rhythmus wie Violine.

80



81



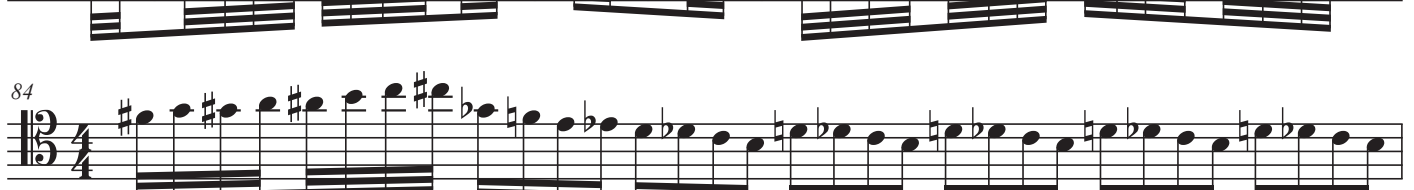
82



83



84



85



86



88



mf

89



90



Takt 91-106: Rhythmus wie Violine.

91



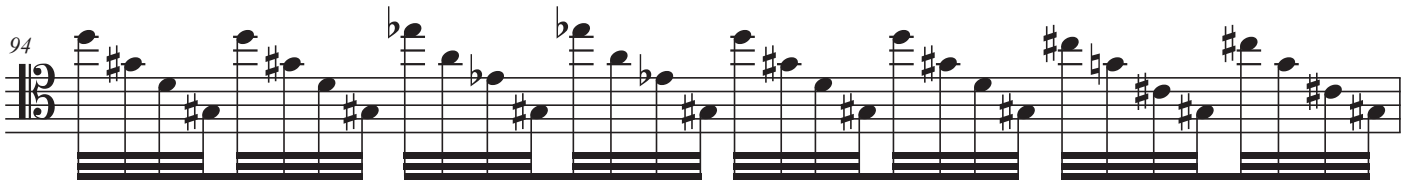
92



93



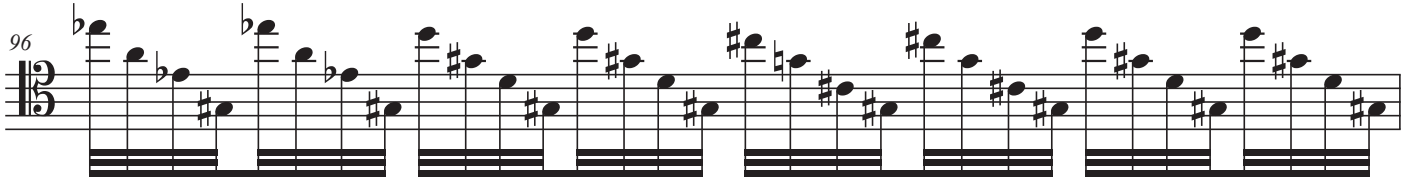
94



95



96



97



99



103

p *p* **3**

110

mf

112

mf

114

mf

115

mf

116

mf

117

mf

118

mp

120

mp **2**

125

Measure 125: Bass clef, starting with a piano (*p*) dynamic. The first half of the measure contains a series of eighth notes with sharps. The second half contains a quarter rest followed by a dotted quarter note, a quarter note, and a quarter note with a sharp. The measure ends with a mezzo-piano (*mp*) dynamic.

126

Measure 126: Bass clef, starting with a piano (*p*) dynamic. The first half of the measure contains a series of eighth notes with sharps. The second half contains a quarter rest followed by a dotted quarter note, a quarter note, and a quarter note with a sharp. The measure ends with a mezzo-piano (*mp*) dynamic.

128

Measure 128: Bass clef, starting with a mezzo-forte (*mf*) dynamic. The measure contains a series of eighth notes with sharps and flats, ending with a quarter note.

129

Measure 129: Bass clef, starting with a mezzo-forte (*mf*) dynamic. The measure contains a series of eighth notes with sharps and flats, ending with a quarter note.

Takt 132-136: Rhythmus wie Violine.

131

Measure 131: Bass clef, starting with a piano-piano (*pp*) dynamic. The measure contains a series of eighth notes with sharps and flats, ending with a quarter note. The measure ends with a mezzo-forte (*mf*) dynamic.

134

Measure 134: Bass clef, starting with a fortissimo (*ff*) dynamic. The measure contains a series of eighth notes with sharps and flats, ending with a quarter note.

135

Measure 135: Bass clef, starting with a fortissimo (*ff*) dynamic. The measure contains a series of eighth notes with sharps and flats, ending with a quarter note.

137

Measure 137: Bass clef, starting with a mezzo-forte (*mf*) dynamic. The measure contains a series of eighth notes with sharps and flats, ending with a quarter note. The measure ends with a fortissimo (*f*) dynamic.

138

Measure 138: Bass clef, starting with a fortissimo (*f*) dynamic. The measure contains a series of eighth notes with sharps and flats, ending with a quarter note. The measure ends with a mezzo-forte (*mf*) dynamic.

139



140



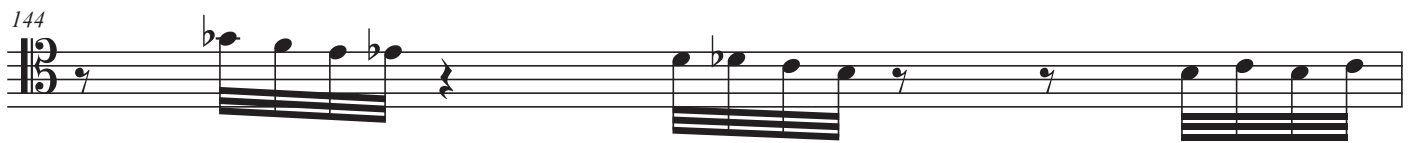
141



142



144



Takt 145-160: Rhythmus wie Violine.

145



146

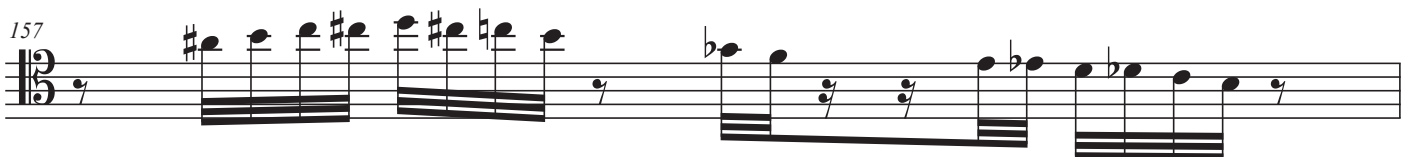
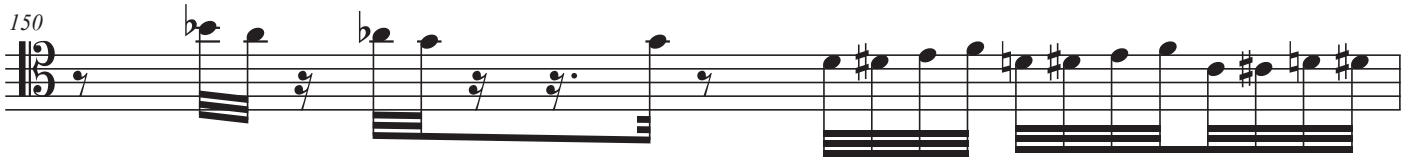


147



148





Takt 163-189: Rhythmus wie Violine.

165

Musical notation for measures 165 and 166. Measure 165 begins with a double bar line and a fermata over a dotted quarter note. The music continues with eighth and sixteenth notes, some with accents (>).

167

Musical notation for measures 167 and 168. Measure 167 features a melodic line with eighth notes and a fermata. Measure 168 has a dynamic marking of *f* followed by *mp*.

169

Musical notation for measures 169 and 170. Measure 169 starts with a double bar line and a fermata over a dotted quarter note. The music consists of eighth and sixteenth notes.

171

Musical notation for measures 171 and 172. Measure 171 begins with a double bar line and a fermata over a dotted quarter note. The music is marked *mf* and includes a triplet of eighth notes. Brackets below the staff indicate groupings: $4 \text{ eighth notes} : 6 \text{ eighth notes}$ and $4 \text{ eighth notes} : 6 \text{ eighth notes}$.

173

Musical notation for measures 173 and 174. Measure 173 starts with a double bar line and a fermata over a dotted quarter note. The music is marked *mp*.

175

Musical notation for measures 175 and 176. Measure 175 begins with a double bar line and a fermata over a dotted quarter note. The music is marked *mf* and features a sequence of eighth notes with flats. Measure 176 is marked *mp*.

177

Musical notation for measures 177 and 178. Measure 177 starts with a double bar line and a fermata over a dotted quarter note. The music is marked *mf* and continues with eighth notes and flats.

178

Musical notation for measures 178 and 179. Measure 178 begins with a double bar line and a fermata over a dotted quarter note. The music is marked *mf* and features eighth notes with flats.

180

Musical notation for measures 180 and 181. Measure 180 starts with a double bar line and a fermata over a dotted quarter note. The music is marked *mf* and continues with eighth notes and flats.

182

184

188

pizz.

arco

mf *mp* *f* *ff* *mf*

(Eb)

191 Takt 191-196: Rhythmus wie Violine.

f

193

mp *f* *mp* *f*

194

196

ff

200