

Violine

# Violin-Klavier-Duo Nr. 2

für Violine und Klavier

Ergon 70 (2019), Musikwerknummer 1892

Vorzeichen gelten jeweils nur für eine einzige Note in der entsprechenden Oktavlage. Unmittelbare Tonwiederholungen (auch durch Pausen getrennte) behalten die gleiche Tonhöhe bei. Töne ohne Vorzeichen gelten immer als nicht alteriert.

René Wohlhauser

♩ = 72

pos. norm. *f* *p* *f* *mp* *détaché* *mp* *f*

*pont.* *pos. norm.* *pont.*

5 *sffz* *pp* *mfmp* *f* *mf* *pos. norm.* *IV.*

8 *IV.* *p*

10 *IV.* *mp* *p*

14 *détaché* *mp* *détaché*

Unisono mit Klavier  
*détaché*

16 *mf* *détaché* *mf* *pp*

18 *arco* *pizz.* *arco* *f*

23 *pizz.* *f* *f* *Klavier* *mp* *f* *mp*

Oss.: c2-g2-cis3  
*arco*

Ossia:  
c2-as2-d3

(*Sea*)

Violin-Klavier-Duo Nr. 2, Violinstimme

2

26 *f* *pizz.* *f* *pizz.* *f* *pizz.* *mf* *pizz.*

31 *mf* *pizz.*

33

36

38

41

43  $(\text{♩} = \text{♪} / \text{♪} = 96)$

1 6  
4 32

46 *arco*

47

Unirhythmisch mit Klavier

48 *mp* 1 4  
8 4

51 *pizz.* *mp*

55 *arco* *mf* *f*

59

62 *ff* *molto vibr. serré*

67 *pp* *trem. alla punta*

74

81 *G.P.* *loco*

90 *ppp* *ppp* **3**

105 *pizz.*  
*mf*

107

109 *pizz.*  
*mf* *pizz.*  
*mf*

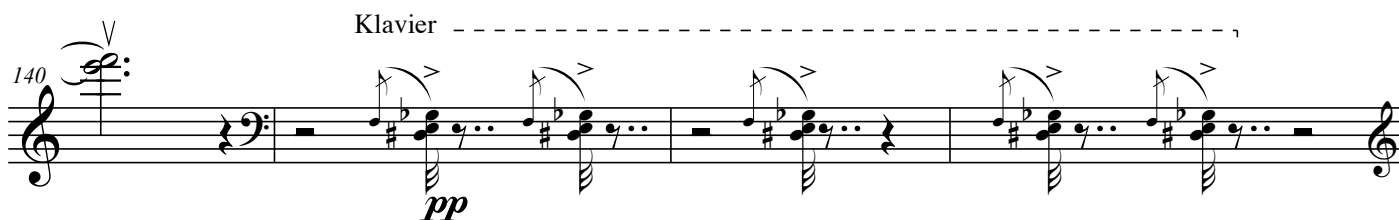
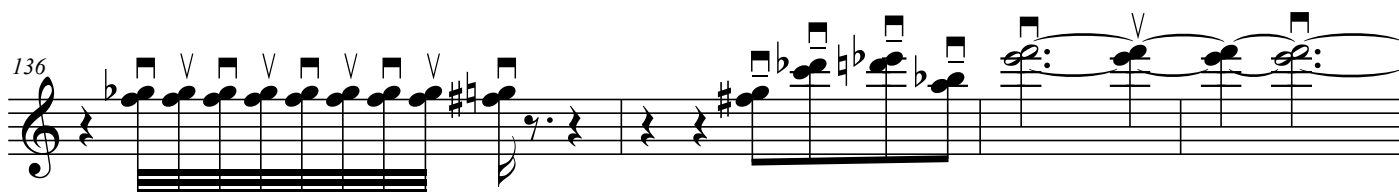
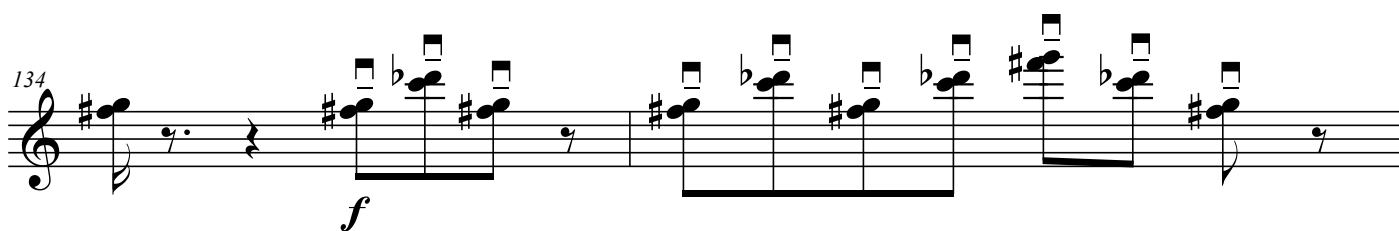
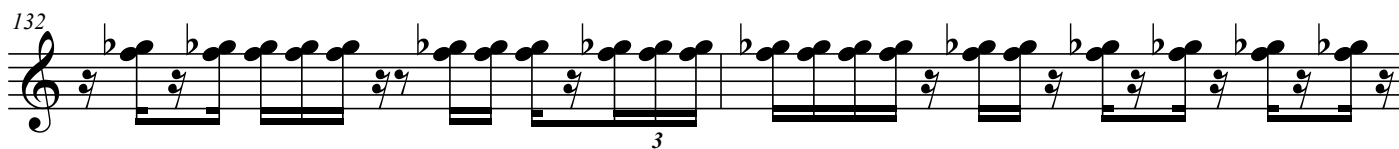
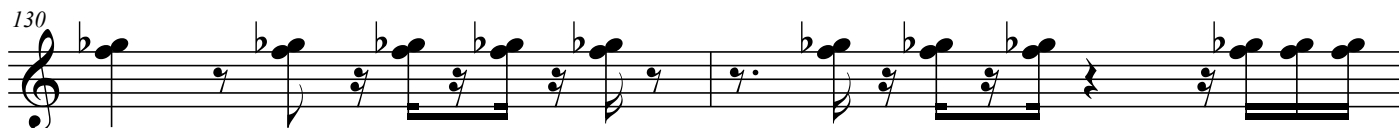
113 *mf* *arco* *f* *p* *f* *pont.* *pos. norm.* *pizz.* *f*  
III. (Keine leeren Saiten)  
IV.

117 *f*

120

123

126 *arco* *f*



144 *legato*  
*mp* *p* *pp*

148 *legato*  
*p* *pp* *pp* *pp*

151 *détaché* (♭)  
*p*

153 *détaché* (♭)  
*p*

155 *détaché*  
*p*

158 *mf*

163 *détaché*

165

167

169 *détaché*

Detailed description: This page of a musical score for the Violin part of 'Violin-Klavier-Duo Nr. 2' contains measures 144 through 169. The music is written in a single staff with a treble clef and a key signature of two flats (B-flat and E-flat). The score is divided into systems of five lines each. Measure 144 begins with a triplet of eighth notes marked *mp*, followed by a *legato* passage marked *p* and *pp*. Measure 148 continues the *legato* line with *p* and *pp* dynamics. Measure 151 introduces a *détaché* section with a *p* dynamic and a flat sign above the notes. Measure 153 continues the *détaché* pattern. Measure 155 features a *détaché* section with a *p* dynamic and a sharp sign above the notes. Measure 158 includes a wavy line above the staff and a *mf* dynamic. Measure 163 continues the *détaché* section. Measure 165 shows a continuation of the *détaché* pattern. Measure 167 features a *détaché* section with a *p* dynamic. Measure 169 concludes the page with a *détaché* section and a *p* dynamic.

170 *détaché*

172

174 *détaché*

176 *détaché*

177

178 *détaché*

179

180

182 *ff*